



Series | Bellows vacuum cups SB

High-temperature Thermalon® bellows cups, 1.5 folds – SKT-B1

High-temperature Thermalon® bellows cups, 1.5 folds – SKT-B1



UP TO 160 °C (320 °F) & MINIMUM MARKING

Product notes

Bellows vacuum cups for uneven surfaces especially suited for removing hot plastic parts to be painted from an injection molding machine. Thermalon® is a material mixture specially optimized for the plastics industry with a hardness of 60° Shore A. Connection via plug-in nipple.

Advantage

- > Extremely low-marking
- > Free of silicone and other paint-wetting-impairment substances (PWIS)
- > Bellows compensate differences in height and enable good adaptation to curved or uneven product surfaces

Technical data

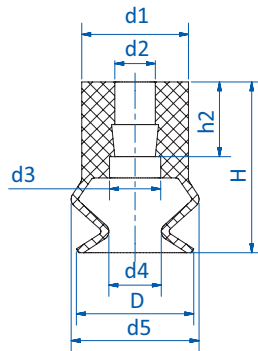
| Item no. | Model | | Number of folds | Material / Color | Short-term working temperature < 30 Sec [°C (°F)] |
|---------------|-----------|------|-----------------|------------------|---|
| 23.005.286.19 | SKT-B1-5 | 2 | 1.5 | Thermalon® (bl) | 0 - 160 (32 - 320) |
| 23.011.234.19 | SKT-B1-11 | 5.5 | 1.5 | Thermalon® (bl) | 0 - 160 (32 - 320) |
| 23.014.235.19 | SKT-B1-14 | 5 | 1.5 | Thermalon® (bl) | 0 - 160 (32 - 320) |
| 23.016.236.19 | SKT-B1-16 | 8.5 | 1.5 | Thermalon® (bl) | 0 - 160 (32 - 320) |
| 23.018.237.19 | SKT-B1-18 | 5 | 1.5 | Thermalon® (bl) | 0 - 160 (32 - 320) |
| 23.020.238.19 | SKT-B1-20 | 5 | 1.5 | Thermalon® (bl) | 0 - 160 (32 - 320) |
| 23.022.239.19 | SKT-B1-22 | 8 | 1.5 | Thermalon® (bl) | 0 - 160 (32 - 320) |
| 23.025.240.19 | SKT-B1-25 | 12 | 1.5 | Thermalon® (bl) | 0 - 160 (32 - 320) |
| 23.033.241.19 | SKT-B1-33 | 11 | 1.5 | Thermalon® (bl) | 0 - 160 (32 - 320) |
| 23.043.242.19 | SKT-B1-43 | 12.5 | 1.5 | Thermalon® (bl) | 0 - 160 (32 - 320) |
| 23.053.243.19 | SKT-B1-53 | 15 | 1.5 | Thermalon® (bl) | 0 - 160 (32 - 320) |
| 23.063.244.19 | SKT-B1-63 | 15 | 1.5 | Thermalon® (bl) | 0 - 160 (32 - 320) |



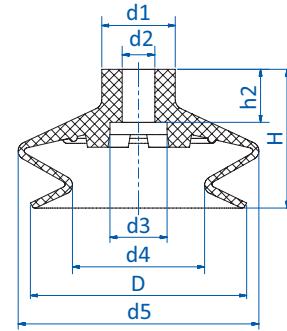
Accessories

| Item no. | Suitable fittings | | | | | | |
|---------------|-------------------|-----------|---------|-----------|-------------|-----------|-------------|
| | M5-male | M5-female | M6-male | G1/8-male | G1/8-female | G1/4-male | G1/4-female |
| 23.005.286.19 | 270.399 | -- | -- | -- | -- | -- | -- |
| 23.011.234.19 | 270.772 | 270.347 | 270.104 | 270.033 | 270.478 | -- | -- |
| 23.014.235.19 | 270.772 | 270.347 | 270.104 | 270.033 | 270.478 | -- | -- |
| 23.016.236.19 | 270.772 | 270.347 | 270.104 | 270.033 | 270.478 | -- | -- |
| 23.018.237.19 | 270.772 | 270.347 | 270.104 | 270.033 | 270.478 | -- | -- |
| 23.020.238.19 | 270.772 | 270.347 | 270.104 | 270.033 | 270.478 | -- | -- |
| 23.022.239.19 | 270.772 | 270.347 | 270.104 | 270.033 | 270.478 | -- | -- |
| 23.025.240.19 | 270.772 | 270.347 | 270.104 | 270.033 | 270.478 | -- | -- |
| 23.033.241.19 | -- | -- | 270.315 | 270.196 | 270.114 | 270.190 | 270.192 |
| 23.043.242.19 | -- | -- | 270.315 | 270.196 | 270.114 | 270.190 | 270.192 |
| 23.053.243.19 | -- | -- | 270.315 | 270.196 | 270.114 | 270.190 | 270.192 |
| 23.063.244.19 | -- | -- | 270.315 | 270.196 | 270.114 | 270.190 | 270.192 |

Dimensions



Drawing A



Drawing B

| Item no. | Drawing | Ø D [mm] | Ø d1 [mm] | Ø d2 [mm] | Ø d3 [mm] | Ø d4 [mm] | Ø d5 [mm] | H [mm] | h2 [mm] |
|---------------|---------|----------|-----------|-----------|-----------|-----------|-----------|--------|---------|
| 23.005.286.19 | A | 5.5 | 7 | 3.8 | -- | 2.5 | 6 | 11 | 7 |
| 23.011.234.19 | A | 11 | 10 | 3.8 | 4.8 | 4.9 | 12 | 16 | 7 |
| 23.014.235.19 | A | 14 | 10 | 3.8 | 4.8 | 4.8 | 14 | 16 | 7 |
| 23.016.236.19 | A | 16 | 10 | 3.8 | 4.8 | 8.2 | 17.5 | 19 | 7 |
| 23.018.237.19 | A | 18 | 10 | 3.8 | 4.8 | 7.8 | 18 | 16.5 | 7 |
| 23.020.238.19 | A | 19 | 10 | 3.8 | 4.8 | 10.6 | 20 | 16 | 7 |
| 23.022.239.19 | A | 22 | 10 | 3.8 | 4.8 | 11.4 | 24 | 19 | 7 |
| 23.025.240.19 | A | 24 | 10 | 3.8 | 4.8 | 9.2 | 25 | 23 | 7 |
| 23.033.241.19 | B | 33 | 18 | 8 | 16 | 17 | 36 | 27.5 | 13 |
| 23.043.242.19 | B | 43 | 18 | 8 | 14 | 22.5 | 46 | 28 | 13 |
| 23.053.243.19 | B | 53 | 18 | 8 | 14 | 32.4 | 59 | 34 | 13 |
| 23.063.244.19 | B | 63 | 18 | 8 | 14 | 42.5 | 67 | 34 | 13 |